

Description



The application of safety switches on machine guards must deal with issues related to ease of installation, mechanical precision of guard movements, the occurrence of critical environmental conditions and, in some cases, even with the presence of clumsy or inadequately informed operators.

These problems become important when the guard is an access door to a protected area: the physical dimensions of the guard and its constructive tolerances create alignment problems with the resulting risk of damage to the safety devices.

This system with integrated closing mechanism is used on safety doors or safety enclosures where it is necessary to control access to dangerous areas of machines or systems.

The VF AP-S safety handle, unlike other products on the market, combines its compactness and lightness resulting from the sliding movement, with the robustness of the upper end models, which are distinguished by a higher weight, more bulky dimensions and greater constructive complexity.

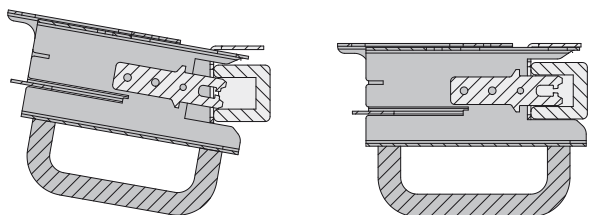
Structure

The VF AP-S handle is light and compact, has a galvanized and painted metal frame and an ergonomic plastic or aluminium grip for comfortable and easy use of the door handle itself.

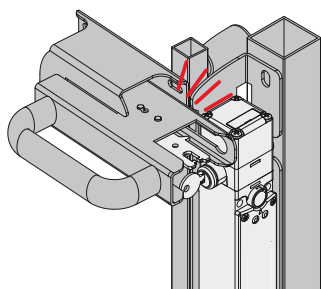
The absence of screws and removable components prevents any tampering.

Centring

The "C"-shaped profile facilitates centring of the device when closing a guard that is not perfectly aligned with the frame. This enables an optimum alignment between actuator and switch, preventing any damage due to possible collisions.



Protection of actuator and switch

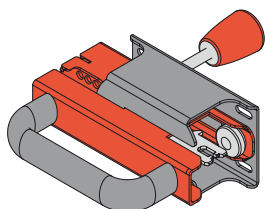


Thanks to the handle structure and the fixing bracket of the switch, both the switch and the actuator can be safely installed preventing any damage due to possible collisions. Any impacts resulting from incorrect actuation are completely absorbed on the handle frame.

Handle lock positions

There is a snap-on device that retains the handle in two positions: when it is pulled out, so as to contribute to the retaining force exerted by the actuator, and when retracted, to avoid undesirable movements caused by machine vibrations.

Internal lever for emergency escape



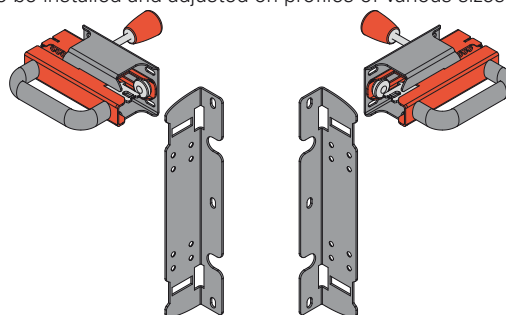
Optional lever for emergency opening from the inside: it ensures that operating personnel can exit the area should they accidentally become trapped within the dangerous area. It can be combined only with switches without lock (e.g. FD •93-M2) or switches with emergency release button (e.g. FG •••D6D••).

Accessories See page 299

Flexibility during installation

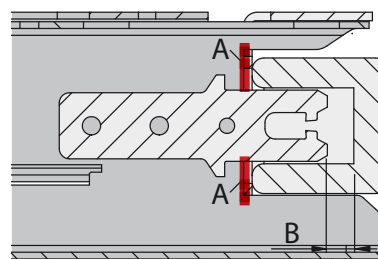
Thanks to its symmetrical design the device can be installed on hinged and sliding doors, either with right or left closing, without requiring any further adjustment.

The slotted brackets and the large actuator travel (60 mm) allow the device to be installed and adjusted on profiles of various sizes.



Mechanical stop

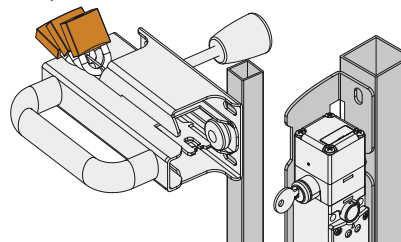
During door closing, a mechanical stop (A) prevents possible impacts between the actuator and the switch by constantly ensuring a safety distance (B) between these two components and the switch housing.



Padlocks

It is possible to fix up to 6 padlocks. Their function is to avoid the mechanical closing of the door and therefore accidental switching of the switch contacts.

Hole diameter for padlocks: 7 mm.





Code structure

Attention! The feasibility of a code number does not mean the effective availability of a product. Please contact our sales office.

VF AP-S13BP-200

Mounting brackets supplied for installation

A	FD ●●●●
B	FG ●●●●●●

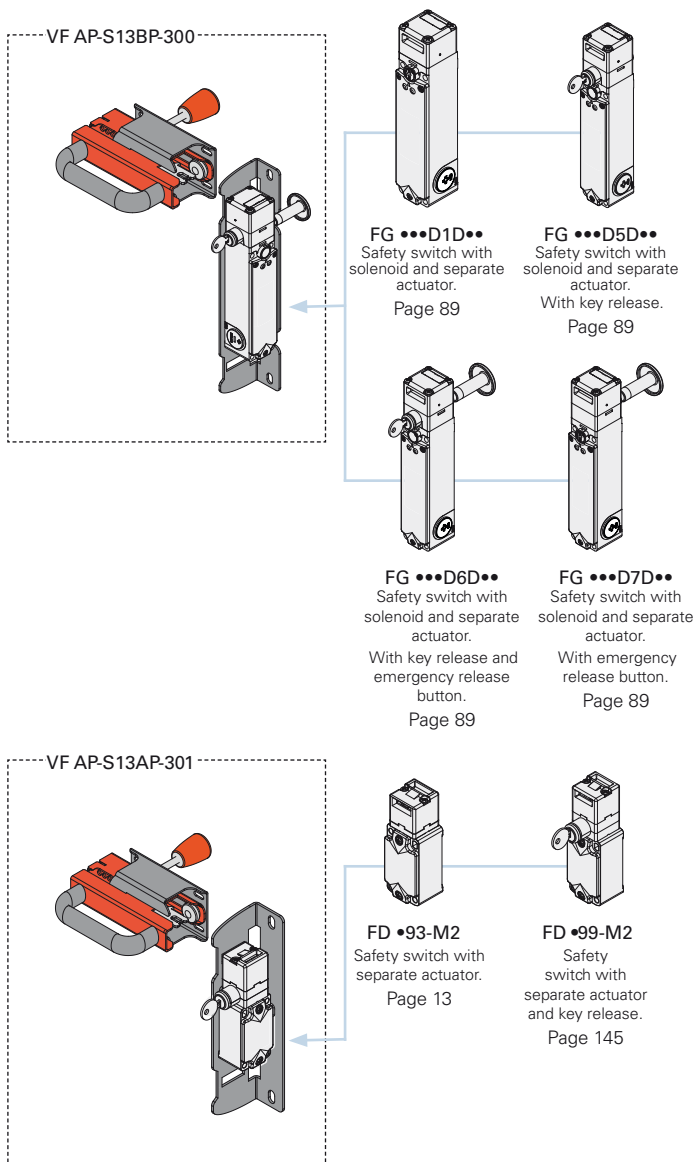
Internal lever for emergency escape

P	internal lever for emergency escape
Z	without internal lever for emergency escape

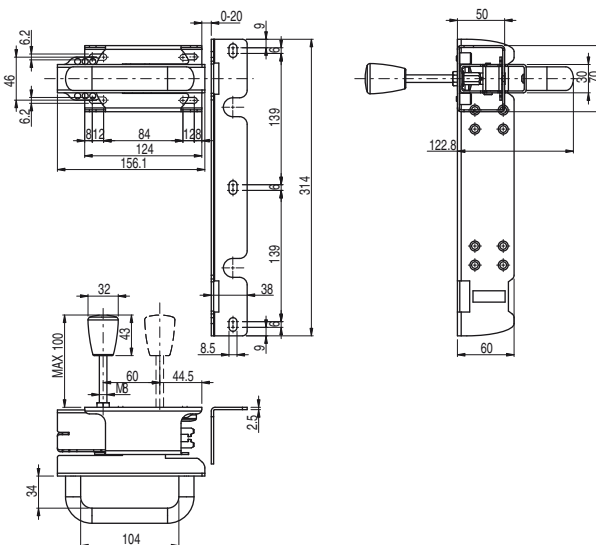
Plate configuration

001	without plate, with aluminium handle
002	without plate, with plastic handle
200	with plate for FG: with screwed-on aluminium handle
201	with plate for FD: with screwed-on aluminium handle
300	with plate for FG: with screwed-on plastic handle
301	with plate for FD: with screwed-on plastic handle

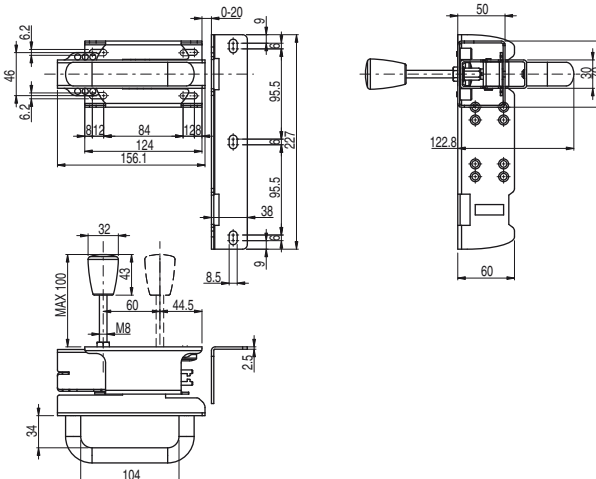
Note: the handle is supplied complete with switch actuator and fastening screws for fixing the switch to the plate.



Safety handle VF AP-S13BP-300



Safety handle VF AP-S13AP-301



FD and FG series safety switches

FD series safety switches with separate actuator



Main features

- Metal housing, one conduit entry
- Protection degree IP67
- 9 contact blocks available
- Versions with assembled M12 connector
- Versions with gold-plated silver contacts

FG series safety switches with solenoid and separate actuator



Main features

- Actuator holding force: 2800 N
- 30 contact blocks with 4 contacts
- Metal housing, three M20 conduit entries
- Protection degree IP67
- Versions with key release and emergency release button
- Signalling LED
- Operation with energised or de-energised solenoid

→ The 2D and 3D files are available at www.pizzato.com

Items with code on **green** background are stock items